

How to Get a Beautiful, Natural-Looking Spray Tan

versaspa[®]
beyond tan

• Watch 3 Minute Video •

QUICK & EASY STEPS: sunless.com/pages/versaspa-in-salon

CREATE A BEAUTIFUL TAN

• **STEP 1: Choose Your Level** •

LEVEL 1

Light:

1-2 shades darker than your natural skin tone

LEVEL 2

Medium:

2-3 shades darker than your natural skin tone

LEVEL 3

Dark:

3-4 shades darker than your natural skin tone

LEVEL 4

Double Dark:

4-5 shades darker than your natural skin tone

• **STEP 2: Choose Instant or Gradual** •

INSTANT OPTIONS

choose your bronzer

GRADUAL OPTION

develops tan in 8 hours

MALIBU

warm brown with cool violet undertones

MONTEREY

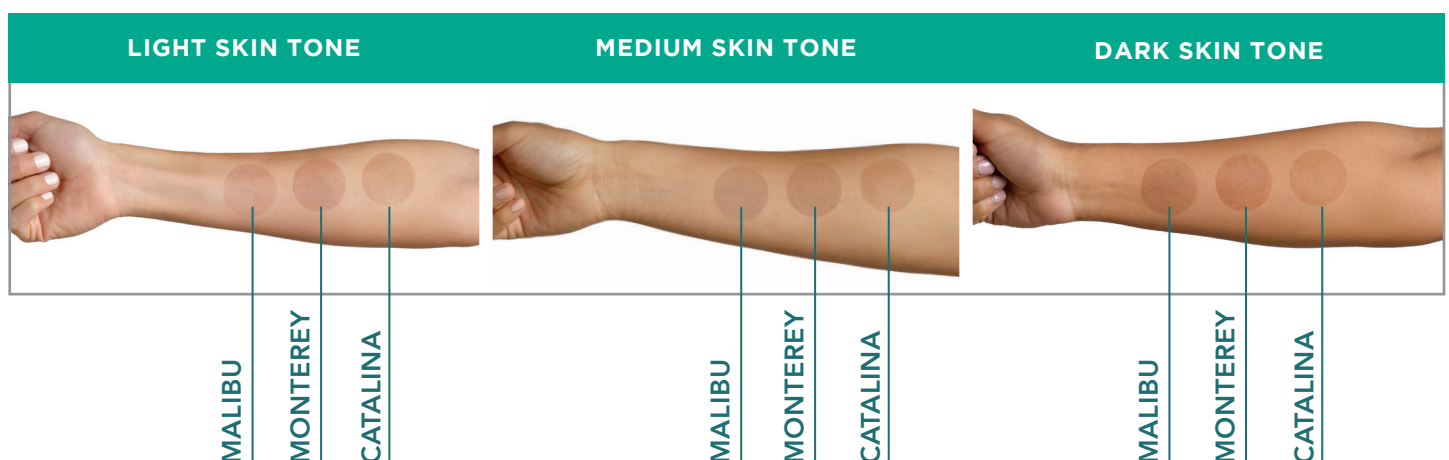
warm brown with caramel undertones

CATALINA

cool brown with violet undertones

CLEAR

no color transfer



• **STEP 3: Add Treatments** •

Ask your salon staff about Perfector and Moisturizer treatments.

PERFECTOR

Balance your pH levels for a deeper, darker, and more even tan.

MOISTURIZER

Provides immediate hydration for the skin, locks-in and deepens color.

PREPARATION • DURING • AFTER

• Preparation •



Undress to comfort level & remove jewelry



Put on hair cap - leave ears & hairline exposed



Apply blending cream to hands & feet including nails



Use sticky feet/footies provided by salon to keep bottom of feet clean

NOTE: the FDA recommends wearing protective eyewear, nose filters, ear plugs, lip balm, and undergarments. Ask the salon staff for details.

• During •

Audio instructions will guide you through 4 easy positions.



• After •

Remove blending cream. Wait 4-6 hours before getting wet, like working out or showering.



ENHANCE
and **extend**
your tan at home
with VersaSpa
products!