



NORVELL®  
EDUCATION • COLOR • ARTISTRY



*m*1000  
SPRAY TAN SYSTEM

## EXPLANATION OF SYMBOLS USED



THIS INDICATES A CONDITION THAT WILL CAUSE SERIOUS INJURY OR LOSS OF LIFE IF THE WARNING IS IGNORED.



THIS INDICATES THAT A CONDITION COULD CAUSE SERIOUS INJURY OR LOSS OF LIFE IF THE WARNING IS IGNORED.



THIS INDICATES A CONDITION THAT MAY CAUSE MINOR INJURY AND/OR EQUIPMENT/PROPERTY DAMAGE.



Read all safety information before operating the equipment.  
Save these instructions.

## M1000 SPRAY SYSTEM

#1 Rated lightweight, portable spray tanning system! Use in a salon or on the go. Expertly crafted to deliver a natural-looking tan and even spray passes with Norvell Solutions. Welcome to the Norvell Family and thank you for entrusting your beautiful glow with the world's most sought-after brand. Whatever the event, occasion, or day of the week Norvell has your shade.

Please visit us at [norvelluniversity.com](http://norvelluniversity.com) to become certified as a spray tanning professional artist. Inside this box is a coupon card with information on how to activate the warranty on your equipment and begin your online training journey at no cost.

Thank you,  
The Norvell Team

### FIELD OF APPLICATION

The Norvell M1000 Pro Mobile Spray Tan System has been specifically developed for the application of Professional Norvell liquid spray tanning solutions. Any application other than that described in this instruction manual is not permitted and will immediately void ALL warranty.

### IMPORTANT SAFETY INSTRUCTIONS

#### ⚠WARNING

##### SAVE THESE INSTRUCTIONS.

To reduce the risks of fire or explosion, electrical shock and the injury to persons, read and understand all instructions included in this manual. Be familiar with the controls and proper usage of the equipment.

- Risk of fire or explosion! Solvent and paint fumes can explode or ignite, causing severe injury and property damage.
- Paints and solvents containing HALOGENATED HYDROCARBONS can react explosively with aluminum. Always check the product's label before using these materials in the unit.
- Hazardous vapors: Paint, solvents, insecticides, and other materials may be harmful if inhaled, causing severe nausea, fainting or poisoning.
- Make sure the room is well ventilated. Avoid all ignition sources, such as static electricity sparks, open flames, hot objects, sparks from connecting and disconnecting power cords, and working light switches.
- Follow the material and solvent manufacturers' safety precautions and warnings. Do not use liquids with flash points less than 100 degrees Fahrenheit (38 degrees Celsius).
- Static electricity can be produced by HVLP spraying. Make sure any electrically conductive object being sprayed is grounded to prevent static sparking. The sprayer is grounded to prevent static sparking. The M1000 is grounded through the electrical cord on the unit. If an extension cord is necessary, that extension cord must be a grounded three-pronged cord. One that is made for the appropriate voltage used.
- Do not carry the turbine while spraying.
- Keep the turbine at the maximum distance from the spraying area.
- The M1000 is not to be used by persons (including children) with reduced physical, sensory or mental capabilities, or lack of experience and knowledge, unless they have been given supervision and instruction.
- Children should be supervised and instructed not to play with the equipment.

## IMPORTANT SAFETY INSTRUCTIONS

### **⚠ DANGER**

Improper installation of the plug can result in the risk of electrical shock. If repair or replacement of the plug or cord is necessary, contact the Norvell support team for assistance. Do not use if the plug or cord is damaged in any way. Only use the unit with an outlet that is properly installed in accordance with local codes and ordinances.



- For any question regarding proper installation of the plug, consult a qualified (licensed or certified) electrician.
- Do not modify the plug provided. If the plug does not fit the outlet, have the proper outlet installed by a qualified electrician.
- This product is for use on a nominal 120-volt circuit. Make sure that the product is connected to an outlet having the same configuration as the plug. No adapters should be used with this product.
- Keep cords away from water. Ground fault circuit interrupter protection should be used when cords are in wet or damp environments.
- When using an extension cord, be sure it is in good condition and heavy enough to meet the specifications in the chart below. If an extension cord is needed the following wire sizes must be used (see chart below).

EXTENSION CORD LENGTH	RECOMMENDED GAUGE
25' CORD	10, 12, OR 14 GAUGE
50' CORD	10 OR 12 GAUGE
100' CORD	10 GAUGE

NORVELL CUSTOMER SERVICE 888.829.2831  
NORVELLTANNING.COM/PROFESSIONAL  
INFO@NORVELLTANNING.COM

## SET UP AND OPERATE YOUR NORVELL M1000 SPRAY TAN SYSTEM

- Plug the Norvell M1000 HVLP spray tan system unit into a proper electrical outlet. Make sure that the electric service provides the nominal 120Vac circuit used by this system. DO NOT attempt to connect the unit to the wrong electric current as this will not only damage your unit but also void your warranty.
- Next, locate the male end of the air hose and connect it to the female quick connect on the M1000 spray tan system.
  - To insert the coupler, pull back on the ring of the black coupler located on the M1000 system and connect it to the male connector on the hose.



- Release the ring to allow the coupler to snap into place. The hose should now be connected to the unit.



- To remove the air hose, pull back on the ring of the black coupler and remove.

### **⚠ CAUTION**

If you have just finished spraying, the connector may be hot. Allow the M1000 HVLP unit to cool down for about 10 minutes before disconnecting the air hose from the HVLP unit. Use Caution!

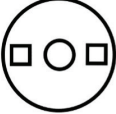

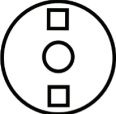



## PREPARE THE SPRAY GUN

- Unscrew the plastic cup from the Spray Gun. Pour Norvell sunless tanning solution into the cup. Do not fill more than 3/4 full.

## ⚠CAUTION

- Carefully screw the cup back onto the main body of the Spray Gun. Screw the cup on firmly but **DO NOT over tighten**. Over tightening will cause the cup to “pop” and damage the threads. Leakage will require replacement of the cup.
- Locate the air cap (#2) on the M1000 SPRAY GUN diagram. Slightly turn the air cap ring (#1) counterclockwise to loosen the air cap. Notice that you can now rotate the air cap freely.
- Look at Spray Gun Patterns diagram below. Note the position of the air cap and the direction of the spray pattern. Pattern 1 is for spraying side to side. Pattern 2 is for spraying up and down. Pattern 3 will produce a spot or circle. Patterns 1 and 2 are the most common positions for applying tanning solutions.
- Turn the air cap (#2) to the position you want. Turn the air cap ring (#1) clockwise to lock the air cap in place.

## SPRAY GUN PATTERNS

AIRCAP POSITION	PATTERN	PURPOSE
		Spray across from side to side
		Spray up & down or vertical (preferred)
		Spray in small spot or circle (contouring)

- Next, position the M1000 HVLP Unit as far away as practical and possible from the area where you will spray.
- Attach the remaining end of the hose to the M1000 HVLP Spray Gun as follows:
  - Locate the coupler at the rear top of the M1000 HVLP Spray Gun. See SPRAY GUN diagram.
  - Pull back on the collar of the black connector on the air hose.
  - Push the connector over the coupler and release.



- Your Spray Gun should now be firmly attached to the air hose.

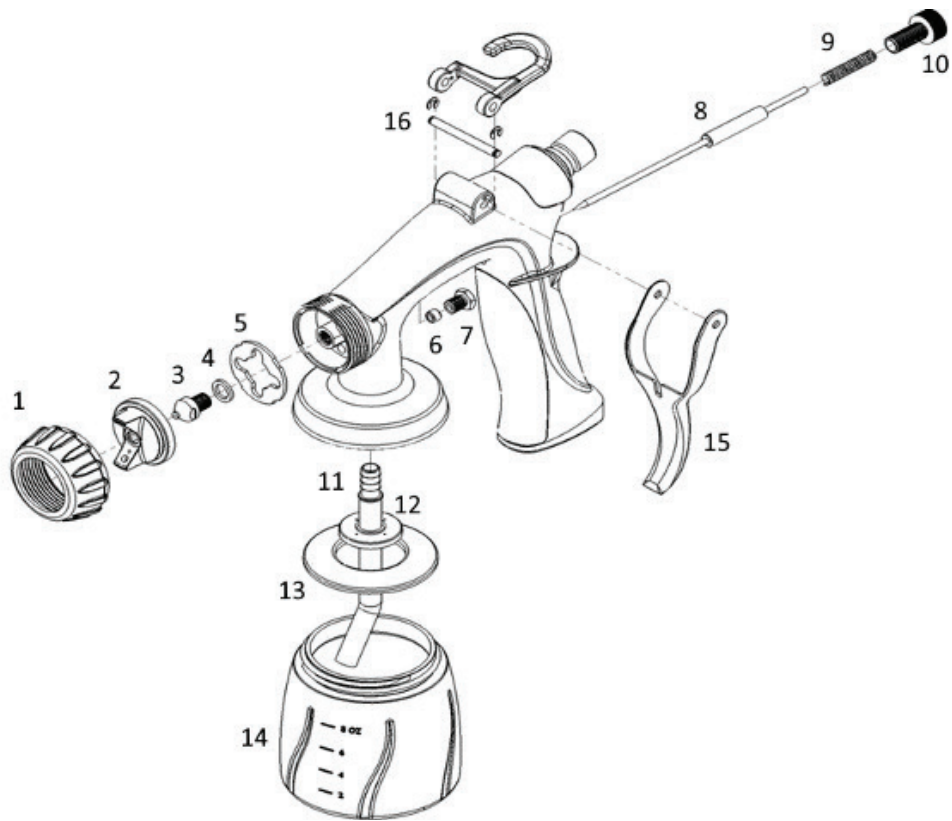
## ADJUSTING THE SPRAY GUN

- Locate the Solution Flow Screw (#10) on the M1000 SPRAY GUN diagram.
- Turning the Solution Flow Screw clockwise reduces and will eventually stop the flow of solution.

## ⚠CAUTION

**DO NOT over-tighten the screw as this will cause damage to the end of the needle. Once the trigger cannot be pulled back there is no point in tightening the screw down more, this will only damage the end of the needle.**

- Turning the Solution Flow Screw anti or counterclockwise will increase the flow of solution.
- In general, 1-2 full turns from the fully closed position will provide a good solution flow. You may find that you want more or less solution. You can adjust the Solution Flow Screw to your desired setting.
- NOTE: Opening the Solution Flow Screw more than 3 turns will not increase the solution flow and will in fact decrease the efficiency of your Spray Gun.*
- In general, hold the M1000 Spray Gun 6" (15cm) from the person being sprayed. Moving the Spray Gun back will increase the size of the mist pattern. Moving the Spray Gun closer will decrease the size of the mist pattern. The further away you hold the Spray Gun, the more you will need to increase the solution flow thus causing abnormal amounts of airborne solution (overspray).
- Holding the Spray Gun closer to the person being sprayed along with a minimum flow of solution will provide the best results, no streaks or running solution and virtually no mist in the spray area.
- Be sure to move the Spray Gun at a slow, steady speed keeping the distance of the Spray Gun the same throughout the application. This will ensure perfect results. It is actually very easy. Practice a few times and you will be an expert.
- It is best to hold the Spray Gun in a vertical position when spraying. If you want to change the direction of the mist pattern, rotate the position of the air cap rather than turning the Spray Gun on its side.
- Always hold or store the Spray Gun in a vertical position. A slot in the M1000 HVLP Turbo Unit is provided to hold and store the Spray Gun. It is a good habit to use it when you are not spraying.



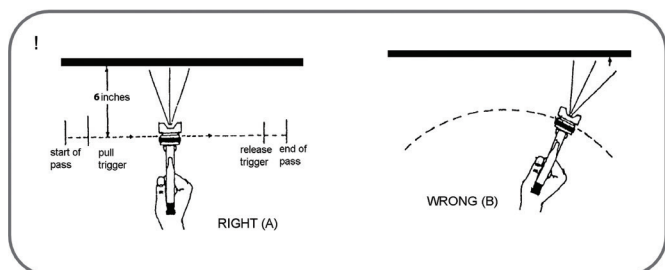
## NORVELL M1000 SPRAY GUN PARTS LIST AND DIAGRAM

DIAGRAM #	PART #	DESCRIPTION
1	202134	AIR CAP COLLAR
2	202138	AIR CAP
3	202139	NOZZLE
4	202140	NOZZLE GASKET
5	202133	AIR DISTRIBUTOR PLATE
6	202012	NEEDLE GASKET
7	202119	NEEDLE PACKING SCREW
8	202137	NEEDLE
9	202142	NEEDLE SPRING
10	202150	SOLUTION FLOW SCREW
11	202135	PICKUP TUBE
12	202136	PICKUP TUBE DISC
13	202145	CUP GASKET
14	202144	SOLUTION CUP
15	NA	TRIGGER
16	NA	TRIGGER PIN



## START SPRAYING

- The ON/OFF switch is located on the M1000 HVLP Spray Tan Unit. Turn it on when ready.
- Open the Solution Flow Screw slowly.
- Set the mist pattern you wish to use by adjusting the air cap to the desired position. Refer to Spray Gun Patterns.
- Direct the Spray Gun to the area of the body that you want to start spraying.
- Pull back on the trigger (#15) and move the Spray Gun as noted in the diagram below. Do not wave the Spray Gun back and forth in front of your client by bending your wrist. Rather, keep your wrist straight and move your entire arm. Movement should be steady, even, and deliberate, always keeping your distance the same.



Filter Cartridge Location

## MAINTENANCE

### NORVELL M1000 HVLP SPRAY TAN SYSTEM

- The only maintenance necessary on the M1000 HVLP unit is cleaning and/or changing the filter element. The filter should be removed and rinsed out at least once every 30 days or after a total of 30 sessions. The filter housing and filter are located on the underside of the M1000 HVLP Unit.
- To clean or replace the filter, pull the tab on the filter housing and remove the housing from the M1000 HVLP unit.
- Pull the filter out of the filter housing to clean or replace it.



M1000 Filter



Removed Filter

## AIR HOSE

- Wipe the air hose daily with a damp cloth and store in a clean dry place.

## SPRAY GUN

- It is important to clean your Spray Gun daily.
- At the end of the day or when the equipment will not be used any more, disconnect the Spray Gun from the air hose.
- Carefully unscrew the cup. If there is remaining solution, either close the cup with a cup lid, or pour the remaining solution into a proper storage container.
- Rinse the cup under warm running water until clean.

- Fill the cup about 1/4 full with water. Reconnect Spray Gun to Air Hose. Turn on the M1000 HVLP Unit. Direct the Spray Gun to a safe area and spray the clean warm water through the Spray Gun until the cup is empty.
- Turn off the M1000 HVLP Unit. Disconnect the Spray Gun. Unscrew the cup.
- Wipe all exposed areas dry.
- Unscrew and remove the Air Cap Collar (#1). Rinse the threads under warm running water. Wipe clean the threads and dry. Add a small amount of Spray Gun lube to the threads.
- Remove the Air Cap (#2). Rinse under warm running water. Wipe clean and dry.
- If necessary, remove Air Distributor Plate (#5). Rinse under warm running water. Wipe clean, dry, and lubricate with Spray Gun lube.
- Reinstall the three pieces you just removed by reversing the removal procedure. Your Spray Gun should be ready for the next use. Store the Spray Gun in the holder on the M1000 HVLP Unit.
- The Solution nozzle (#3) can be removed for additional cleaning if necessary. Be careful. There is a Solution nozzle gasket (#4) around the threads of the Solution nozzle. Be sure to reinstall or leakage will occur. Removal of the Solution nozzle is not necessary on a daily basis. You should, however, remove it once a week and rinse under running water. The Solution nozzle can be easily removed with an adjustable wrench or spanner or the wrench provided in the Spray Gun Repair Kit. Place the tip of your adjustable wrench or spanner on the two flat areas of the nozzle and twist counterclockwise.
- The Solution needle (#10) can also be removed for additional maintenance. To remove: Turn the Solution Flow Screw anti or counterclockwise until it comes out of the Spray Gun. Be careful when removing the Solution Flow Screw as there is a small spring (#9) around the needle. Do not lose it. This is important to the operation of the Spray Gun. Set the spring aside and pull the trigger all the way back until you can grab the needle with your fingertips and pull it out from the back of the Spray Gun. Once removed, rinse under warm running water, clean and dry. Reinstall reversing the removal procedure. *NOTE:* Occasionally it is necessary to lubricate the needle (#10) where it slides through the gland nut (#7). Simply rub a few drops of Spray Gun lube around the needle shaft and reinsert into the back of the Spray Gun.

## TROUBLESHOOTING

- 1. The M1000 HVLP unit is turned ON and air is blowing out of the M1000 Spray Gun.** This is correct. Air blows constantly when the HVLP unit is ON.
- 2. The M1000 HVLP unit is turned ON but the unit is not operating or blowing air.** Check that the unit is plugged in to a proper electrical source. Be sure there is power at the electrical source. If there is no problem with the electrical supply, please call Norvell technical support.
- 3. The M1000 HVLP unit is turned ON and the trigger is pulled back, but no solution comes out.** Check that the cup is screwed firmly to Spray Gun. Check that there is no solution bubbling or leaking around the cup. Turn M1000 HVLP unit OFF. Unscrew cup. Be sure that Solution Tube and Disc (#14) is connected and has not come loose. Locate the two small holes in the Disc around the Solution tube. Be sure that these two small holes are not clogged with dried solution. To clean, carefully insert a pin through each hole ensuring that they are clear. Turn M1000 HVLP Turbo unit OFF. Remove the Air Cap Collar (#1), the Air Cap (#2) and the Air Distributor Plate (#5). Remove

Solution nozzle (#3) with an adjustable wrench or spanner. There is a Solution nozzle gasket (#4) on the Solution nozzle. Do not lose it. Rinse Solution Nozzle under running water and check for dried solution that may have blocked the hole. Reinstall Solution Nozzle Gasket. Reinstall the nozzle assembly. Try spraying again. If you still have a problem, please call Norvell technical support.

- 4. There is solution leaking in front of the trigger.** With a wrench, tighten Solution Needle Packing Screw (#7). Do not over tighten. This can cause Solution needle to stick and not spring back. Try spraying again. If leaking continues the Solution Needle Packing needs to be replaced. Remove Solution Needle Packing Screw (#7). Pry out the Solution Needle Spring (#9). Replace. Reinstall Solution Needle Packing Screw. Tighten all the way, and then back off slightly. (1/8 turn) Test spray gun for leakage. If you still have a problem, please call Norvell technical support.

- 5. Solution is spraying out of the nozzle without the trigger being pulled.** Immediately turn M1000 HVLP unit OFF and disconnect spray gun from air hose. Slightly adjust (loosen) Solution Needle Packing Screw (#7). Test to see if problem is resolved. Check to see that Needle Spring is installed. (#9). Remove Solution Flow Screw (#10). Look for Needle Spring around the back of the Solution Needle. (See diagram). If lost, call for a replacement. Check Solution nozzle. Remove and clean using item 4, above.

- 6. Solution is leaking out around the top of the cup.** Make sure that the cup has been screwed firmly to the body of the Spray Gun. Make sure the threads around the cup are clean and the threads inside the cup top assembly are clean. Replace the Cup Gasket (#13) by prying out the old gasket and firmly pressing a new gasket into position.

---

### WARRANTY AND TECHNICAL SUPPORT

For all technical questions please call Norvell, A Division of Sunless, Inc. at 855.450.3500. For spraying technique and certification visit [norvelluniversity.com](http://norvelluniversity.com).

### TECHNICAL SUPPORT

Available Monday-Friday | 8AM-4:30PM, CST.

Norvell

855.450.3500

[norvelltanning.com](http://norvelltanning.com)

Norvell, A Division of Sunless, Inc.

### MAINTENANCE VIDEOS

We have created a series of videos to help you properly care for your Norvell equipment. These can be found at:

[norvelltanning.com](http://norvelltanning.com)

[youtube.com/user/NorvellSunless](https://www.youtube.com/user/NorvellSunless)

### REPAIR

Norvell has an in-house repair department to assist you if your equipment is in or out of warranty. Contact Norvell for instructions in utilizing this support.

Available Monday-Friday | 8AM-4:30PM, CST.

855.450.3500

[contact@norvelltanning.com](mailto:contact@norvelltanning.com)

The Norvell Mobile M1000 Turbine is warranted by Norvell for a total period of one (1) year from the ORIGINAL date of purchase by the ORIGINAL PURCHASER. Proof of purchase should be included and all SHIPPING CHARGES to be pre-paid when sending back to Norvell for repair.

Norvell, upon examination of the machine/equipment, will replace or repair, at their discretion, defects in material or workmanship. The warranty covers manufacture defects only.

This warranty does not include:

Misuse, damage, neglect, alterations, disassembled equipment or modifications, lack of maintenance, cleaning, water damage to electrical parts and incorrect voltage connection.

This warranty in lieu of all other express warranties, any warranty implied by law, including but not limited to implied warranties of merchantability to fitness, is excluded to the maximum extent permitted by law and, if not excludable, it is limited to the duration of the express warranty.

No representative or person is authorized to extend this warranty or to create for Sunless, Inc./Norvell, any other liability in connection with the sale of any Norvell products.

Sunless, Inc./Norvell shall not be liable for any consequential, incidental, or special damages of any kind directly or indirectly resulting from breach of any express or implied warranty.

DO NOT USE EQUIPMENT BEFORE READING THIS MANUAL!

This manual contains important warnings and instructions.

Call to register your warranty today.

Please read these instructions carefully and keep for your reference.



---

**NORVELL, A DIVISION OF SUNLESS, INC.**

Customer Service 888.829.2831 or 615.529.1250

[norvelltanning.com/professional](http://norvelltanning.com/professional)